



# Shortening Filtration Products

ACS STOCK #	FILTER SIZE & DESCRIPTION	MODEL	WT.	CUBE	PACK
<b>AUTOMATIC FILTER SHEETS</b>					
A1217S3	12 1/2" x 17 3/4"	Frymaster	2.00#	0.46	100
* A1120S3	11 1/4" x 20 1/4"	Frymaster	2.25#	0.43	100
A1625S3	16 1/2" x 25 1/2"	Frymaster	3.50#	0.84	100
* A1324S4	13 1/2" x 24"	Pitco/Frialator	7.50#	0.87	100
A1728S5	17 1/2" x 28"	Pitco/Frialator	11.25#	1.28	100
* A1122S4	11" x 22 5/8"	Dean	5.50#	0.67	100
A1222S4	12 5/8" x 22 5/8"	Dean	6.25#	0.78	100
A1618S4	16 3/8" x 18 3/8"	Dean	6.75#	0.88	100
A1624S4	16 3/8" x 24 3/8"	Dean	9.75#	1.08	100
* A1521S4	15" x 21"	Keating	7.25#	0.81	100
* A2022S4	20 1/2" x 22 3/4"	Keating	10.75#	1.22	100
* A2430S4	24" x 30"	Keating	16.75#	1.79	100
* A1116S4	11 1/4" x 16 3/4"	Chester Fried	4.25#	0.50	100
* A1223S4	12" x 23 1/2"	Anets	6.50#	0.75	100
A1423S4	14 3/4" x 23 1/8"	Broaster	8.00#	0.88	100
A2133S3	21" x 33 1/2"	Various	17.00#	1.80	100

<b>AUTOMATIC FILTER ENVELOPES</b>					
A1421E4	14" x 22" with a 1 1/2" hole - std. paper	Henny Penny	5.25#	0.80	100
* A1313E4	13" x 13 1/8" no hole	Fast	8.00#	0.68	100
* A918E3	9 1/4" x 18 1/4" w/ 1 1/2" hole	Bar-B-Q King	2.75#	0.45	100
A1113E4	11" x 13" w/ 7/8" hole 2 sides	Belshaw	6.50#	0.58	100
A1422E3	14" x 22" w/ 1 1/2" hole - non-woven	Henny Penny	5.25#	0.80	100
* A1014E4	10 3/4" x 14" no hole	Vulcan Hart	7.00#	0.62	100
* A1221E4	12" x 21 1/2" w/ 1" hole 2 sides	Vulcan Hart	12.00#	1.00	100
A1820E5	18 1/2" x 20 1/2" w/ 1 1/2" hole	Pitco Frialator	20.00#	1.46	100
* A1111E4	11" x 11" w/ 7/8" hole 2 sides	Sparkler	5.50#	0.50	100
A1416E4	14" x 16" w/ 7/8" hole 2 sides	Sparkler	10.25#	0.89	100
* A1717E4	17" x 17" w/ 7/8" hole 2 sides	Sparkler	13.25#	1.13	100
* A2425E4	24" x 25" w/ 1 3/4" hole 2 sides	Sparkler	27.75#	2.26	100
* A913E4	9 1/4" x 13" w/ 1" hole	Hunter	5.50#	0.53	100
A1418E4	14" x 18" w/ 1 1/2" hole	Hunter	13.25#	1.11	100
A1718E4	17 3/4" x 18 3/4" w/ 1 1/2" hole	Hunter	15.25#	1.32	100
* A1423E4	14 1/4" x 22 1/2" w/ 3/4" hole	Collectromatic	14.25#	1.20	100
A1722E4	17" x 22" 1/2" w/ 3/4" hole	Collectromatic	17.75#	1.50	100
* A1521E4	15 1/2" x 21" w/ 1 1/2" hole	C.E.C.	15.00#	1.30	100
* A1719E3	17 1/4" x 19 1/4" no hole	Frymaster	5.50#	1.40	100
* A1920E4	19 3/4" x 20 3/4" w/ 1 1/2" hole 2 sides	Immaculator	19.00#	1.60	100
* A1016E4	10 3/4" x 16" no hole	Star	8.00#	0.71	100
* A1214E4	12 1/4" x 14 1/4" w/ 1 1/2"	KFC	7.50#	0.65	100
A1415E4	14" x 15" w/ 7/8" hole 2 sides	KFC	11.00#	0.89	100
* A1924E4	19 1/4" x 24" w/ 1 1/2" hole 2 sides	KFC	21.25#	1.82	100

**All products are in-stock except where (\*) is indicated.  
These are available on a "Special Order" basis only.**

ACS STOCK #	FILTER SIZE & DESCRIPTION	MODEL	WT.	CUBE	PACK
-------------	---------------------------	-------	-----	------	------

### AUTOMATIC FILTER SHEETS

A2178D4	21 7/8" Diameter with 1 5/8" hole	Prince Castle	9.50#	0.84	100
A1200/D4	12" Diameter with 3" slot	Mies	3.00#	0.41	100
* A1375D4	13 3/4" Diameter with 1 5/8" hole	Mies	4.25#	0.39	100
A1825D4	18 1/4" Diameter with 1 5/8" hole	Mies	7.00#	0.56	100
* A2350D4	23 1/2" Diameter with 1 5/8" hole	Mies	11.25#	0.87	100
* A1400T4	14" Diameter with 4 - 2 5/8" Tabs	Keating	5.00#	0.46	100
* A1375T4	13 3/4" Diameter with 4 Tabs	Broaster	5.00#	0.46	100
* A1450D4	14 1/2" Diameter no hole	Renu	4.50#	0.46	100
A1575D4	15 3/4" Diameter no hole	Renu	5.25#	0.56	100
A2150D4	21 1/2" Diameter no hole	Renu	9.25#	0.84	100
* A1775D4	17 3/4" Diameter no hole	Anets	7.00#	0.51	100

### AUTOMATIC FILTER ENVELOPES

AFC-10-50	10" Regular Cone		11.00#	1.55	10/50
AFCH1	10" Cone Holder		1.00#	1.07	1 ea.
AFC-13	13" Regular Cone		12.00#	1.70	100

### ADDITIVES & FRYER CLEANER

A-DE-25	Filter Powder (Diatomaceous Earth)		25.00#	1.26	BAG
A-DE-50	Filter Powder (Diatomaceous Earth)		50.00#	2.10	BAG

### FILTER STOCK NO. LEGEND

Filter Type	Filter Material	Example:
E = Envelope	2 = Super flow synthetic non-woven material	<u>A1414E4</u>
D = Disc	3 = Standard flow synthetic non-woven material	A = ACS
S = Sheet	4 = 44 pound creped paper material	1414 = Filter Size
	5 = 50 pound creped paper material	E = Filter Type
		4 = Filter Material

ACS/Scrubble® Products Division stocks the majority of the filters described on this price list. There are, however, several types of filters that are low volume and may not be kept in stock, which will require a few weeks to manufacture. Please contact our Customer Service Department to check on availability.

### SPECIAL FILTER ORDERS

If the filter that you require is not listed on this price list, please send a sample to the Scrubble® Products Division and we will match the filter to those specifications.

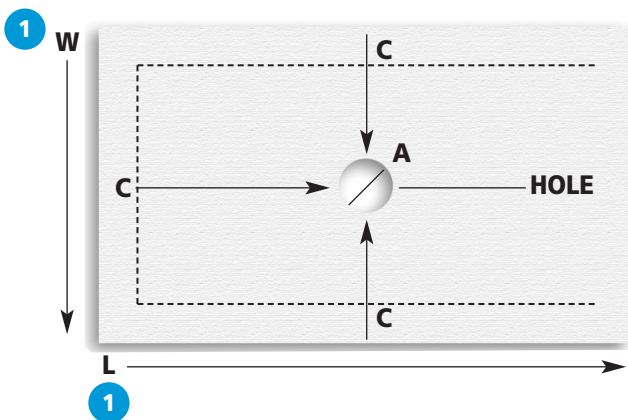
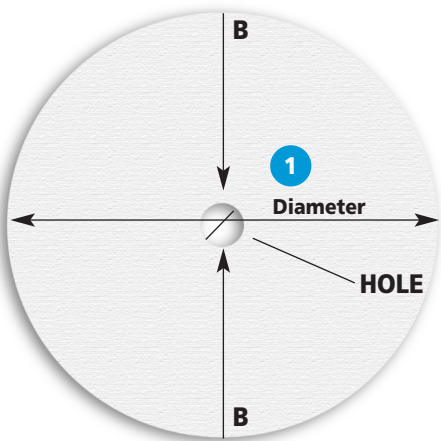
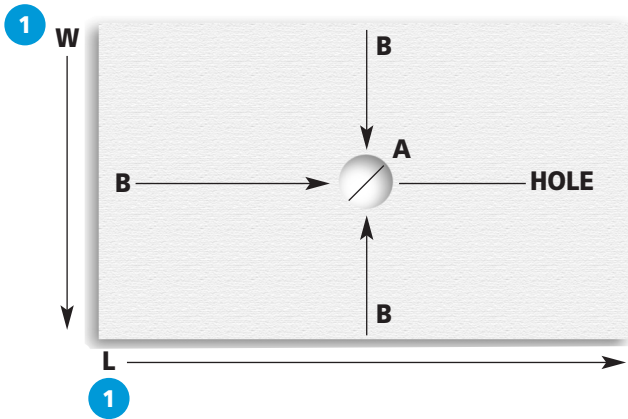
Send to: ACS Industries, Inc.  
Scrubble® Products Division  
One New England Way  
Lincoln, RI 02865

UPS Shipments: ACS Industries, Inc.  
Scrubble® Products Division  
One New England Way  
Lincoln, RI 02865

**All ACS Industries, Inc.'s Filter Paper is NSF (National Sanitation Foundation)  
listed under Standard 51.**

## HOW TO SIZE UP A FILTER

Measure width, length, or diameter of the filter to the most outside points. Note any hole in the filter, the location of the hole, and size or diameter of the hole.



### SHEETS

#### SINGLE THICKNESS

1. Measure width and length.
2. If a hole is present:
  - A. Measure across the opening of the hole to determine the diameter.
  - B. Measure all sides to the outside of the hole to determine the position.

### DISC

#### ROUND WITH HOLE OR WITHOUT HOLE

1. Measure diameter of disc.
2. If a hole is present:
  - A. Measure across the opening of the hole to determine the diameter.
  - B. Measure all sides to the outside of the hole to determine the position.

### ENVELOPE

DOUBLE THICKNESS WITH STITCHING ON 2 OR 3 SIDES. THESE FILTERS WILL COME WITH OR WITHOUT HOLES. IF A HOLE IS PRESENT, IT WILL EITHER BE THROUGH 1 SHEET OR GO DIRECTLY THROUGH THE FILTER

1. Measure width and length.
2. If a hole is present:
  - A. Measure across the opening of the hole to determine the diameter.
  - B. Make a note if the hole is through 1 side of the filter or passes straight through both sides of the filter.
  - C. Measure from the closed or stitched points of the filter to the edge of the hole. You should have 3 measurements for the hole position when you've finished.

For assistance in matching up a filter, call **1-800-222-2880** and ask us.

# Other Fine Cleaning Products from ACS

Item Number	Description	Case Pack	Case Weight	Case Cube
<b>METAL &amp; PLASTIC SCRUBBERS</b>				
10-100	"300" Series Stainless Steel Scrubbers – 50 gram	1/12	1.5#	.16
10-100BX	"300" Series Stainless Steel Scrubbers – 50 gram – Boxed	6/12	14.0#	1.65
304PB	"300" Series Stainless Steel Scrubbers – 50 gram – Bagged	6/12	11.5#	1.50
15-100	"400" Series Stainless Steel Scrubbers – 50 gram	1/12	1.5#	.16
434PB	"400" Series Stainless Steel Scrubbers – 50 gram – Bagged	6/12	11.5#	1.50
434BX	"400" Series Stainless Steel Scrubbers – 50 gram – Boxed	6/12	14.0#	1.63
434SPB	"400" Series Stainless Steel Scrubbers – 35 gram	6/12	7.0#	.60
434100	"400" Series Stainless Steel Scrubbers – 100 gram	6/12	2.8#	.27
BRASS35	Large 35 gram Brass Sponge	6/12	7.0#	.60
BRASS50	Extra Large 50 gram Brass Sponge	6/12	11.5#	1.50
3A	Pure Copper Mesh Sponge – 50 gram	6/12	11.5#	1.50
PS700	Plastic Mesh Power Scrubber	4/6	2.0#	.61
<b>NYLON SCOURING PADS</b>				
96-601	General Purpose Green Scouring Pads – 6" x 9"	1/20	1.5#	.26
96-601A	General Purpose Anti-Microbial Formula – 6" x 9" Inhibits growth of odor causing bacteria in the pad, long lasting, superior scouring	1/20	1.5#	.26
S096A	General Purpose Anti-Microbial Formula – 6" x 9" Inhibits growth of odor causing bacteria in the pad, long lasting, superior scouring	6/10	4.0#	.65
S096	General Purpose Green Scouring Pads – 6" x 9"	6/10	4.0#	.65
96-050	General Purpose Green Scouring Pads – 3 1/2" x 5"	1/60	1.5#	.41
86-606	Heavy Duty Green Scouring Pads – 6" x 9"	1/20	1.5#	.26
86-606A	Heavy Duty Anti-Microbial Formula – 6" x 9" Inhibits growth of odor causing bacteria in the pad, long lasting, superior scouring	1/20	1.5#	.26
S086A	Heavy Duty Anti-Microbial Formula – 6" x 9" Inhibits growth of odor causing bacteria in the pad, long lasting, superior scouring	6/10	5.5#	.74
S86	Heavy Duty Green Scouring Pads – 6" x 9"	6/10	5.5#	.74
98-604	Fine White Scouring Pads – 6" x 9"	6/10	3.0#	.84
90-030	Fine White Scouring Pads – 3 1/2" x 5"	1/40	1.0#	.42
S088	Extra Heavy Duty Blue Pot Scrubbers – 3 1/2" x 5"	4/10	2.0#	.34
88-650	Extra Heavy Duty Blue Pot Scrubbers – 3 1/2" x 5"	1/20	1.0#	.19
<b>GRILL/GRIDDLE CLEANING PRODUCTS</b>				
GB12	Grill Friend Brick	1/12	7.0#	.83
20-682	Grill Screens	10/20	3.5#	.13
GS103	Grill Screens	50/8	8.0#	.40
46-673	Griddle Pads – 4" x 5 1/2"	1/20	1.0#	.19
GP100	Griddle Pads – 4" x 5 1/2"	6/10	2.5#	.45
GH100	Griddle Pad/Screen Holder – Metal Base	1/10	6.0#	.43
676	Griddle Pad Holder – High Heat Resistant	1/10	2.5#	.32
678	Griddle Cleaning Kit Contents: (1) pkg. 20 screens, (1) pkg. Griddle Pads, (1) Griddle Pad Holder #676	1/6	8.0#	.20
<b>CELLULOSE SPONGES</b>				
74-612	Scrubber Sponge Med. Green Backed – 6 1/4" x 3 3/8" x 7/8"	1/20	2.5#	.30
SC200	Scrubber Sponge Med. Green Backed – 6 1/4" x 3 3/8" x 7/8"	8/5	6.5#	.60
63-614	Scrubber Sponge Fine White Backed – 6 1/4" x 3 3/8" x 7/8"	1/20	2.5#	.30
7AU-665	Large Cellulose Block Sponge – Yellow – 6 1/4" x 4 1/8" x 1 3/4"	1/24	5.0#	.73
<b>INSTITUTIONAL HOTEL SIZE SOAP PADS</b>				
24-002	Hotel Size Soap Pads – Boxed	12/10	11.5#	1.26
24-000	Hotel Size Soap Pads – Boxed	6/10	6.5#	.75
ISPO1PB	Hotel Size Soap Pads – Bagged	12/10	8.2#	1.30
24-005B	"Tough Scour" Nylon Soap Pads	4/5	2.5#	.30

## Warehouse & Manufacturing Plants

Lincoln, Rhode Island  
Ontario, California  
& Monterrey, Mexico

For additional information:  
Call 800-222-2880  
Or go to [www.acs-cp.com](http://www.acs-cp.com)



One New England Way • Lincoln, RI 02865  
Tel. 800-222-2880 Fax 401-333-6088  
Web Address: [www.acs-cp.com](http://www.acs-cp.com)  
Email: [cleaning@acsind.com](mailto:cleaning@acsind.com)